

ACCEPTABLE All shirts identical - outermost layer (you can have a long sleeved base layer that doesn't match the outer layer or any team mates base layer)



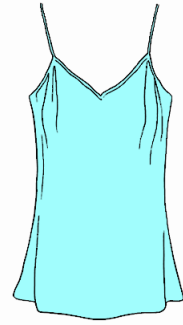
NOT ACCEPTABLE shirts are not all identical



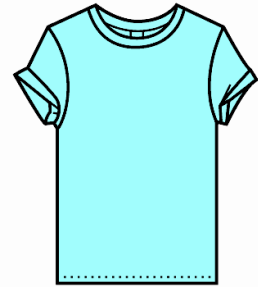
NOT ACCEPTABLE- unless the only difference is an embroidered name. Manufacturers logos must be the same.



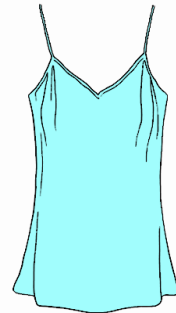
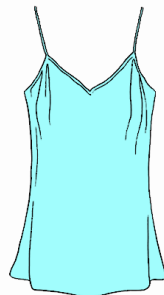
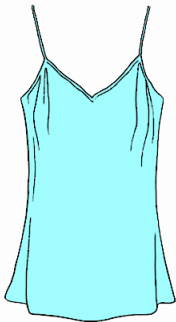
ACCEPTABLE - as long as all team members have the same polo shirt layer



NOT ACCEPTABLE - not matching



NOT ACCEPTABLE - not matching



NOT ACCEPTABLE - all tops must cover the shoulder



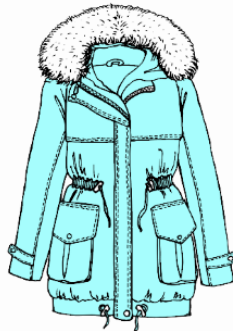
ACCEPTABLE - items are identifiable as one team



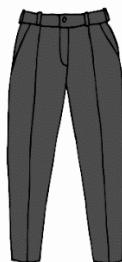
NOT ACCEPTABLE - items do not match



ACCEPTABLE - as long as all team members have both matching layers available.

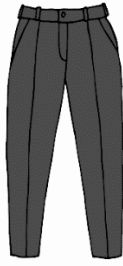
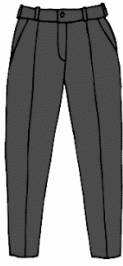


ACCEPTABLE if it is raining / cold

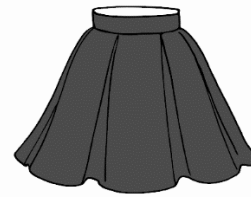


ACCEPTABLE ONLY AT THE HOME NATIONS QUALIFIER.

JEANS are acceptable, but not ripped jeans (including items sold pre-ripped)



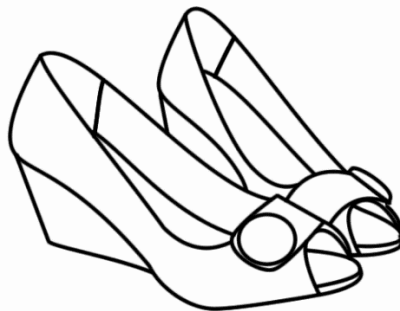
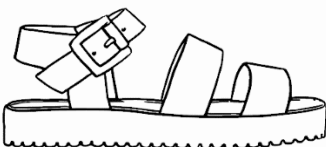
REQUIRED for all Ranking events and, from 2019, the Euro Cup Qualifying matches Final and Semi Final Rounds



ACCEPTABLE - The skirt image is used here to represent any garment of a different length, so shorts / cropped length trousers are covered by this image.



ACCEPTABLE - toe and heel are closed so there is no possibility of the string getting between sole and upper creating a trip hazard when stepping either forward or backward.



NOT ACCEPTABLE - toe and/or heel are not closed so there is a possibility of the string getting between sole and upper creating a trip hazard when stepping either forward or backward.

Issued 1st May 2018